

Terms of use

The Blue Solutions Initiative on behalf of BMUB has developed these training courses. For any use, you must respect the following terms of use:

- The slide master and imprint are mandatory. They may neither be altered nor removed from the presentation.
- The Blue Solution logo must not be moved or removed. No other logos or further information may be placed in the header or footer area.
- If you wish to add your own content, please use the blank slide at the end of this presentation. (You can copy it to add slides.)
- If you would like to make substantial changes to the content of this presentation, you must contact mario.cana@grida.no



Identifying the need and process design

Blue Planning in Practice



BLUE SOLUTIONS

giz Deutsche Gesellschaft
für Internationale
Zusammenarbeit (GIZ) GmbH

GRID
ARENDA
A GIZ/CoE Collaboration with UNEP



UN
environment



Federal Ministry
for the Environment, Nature
and Nuclear Safety

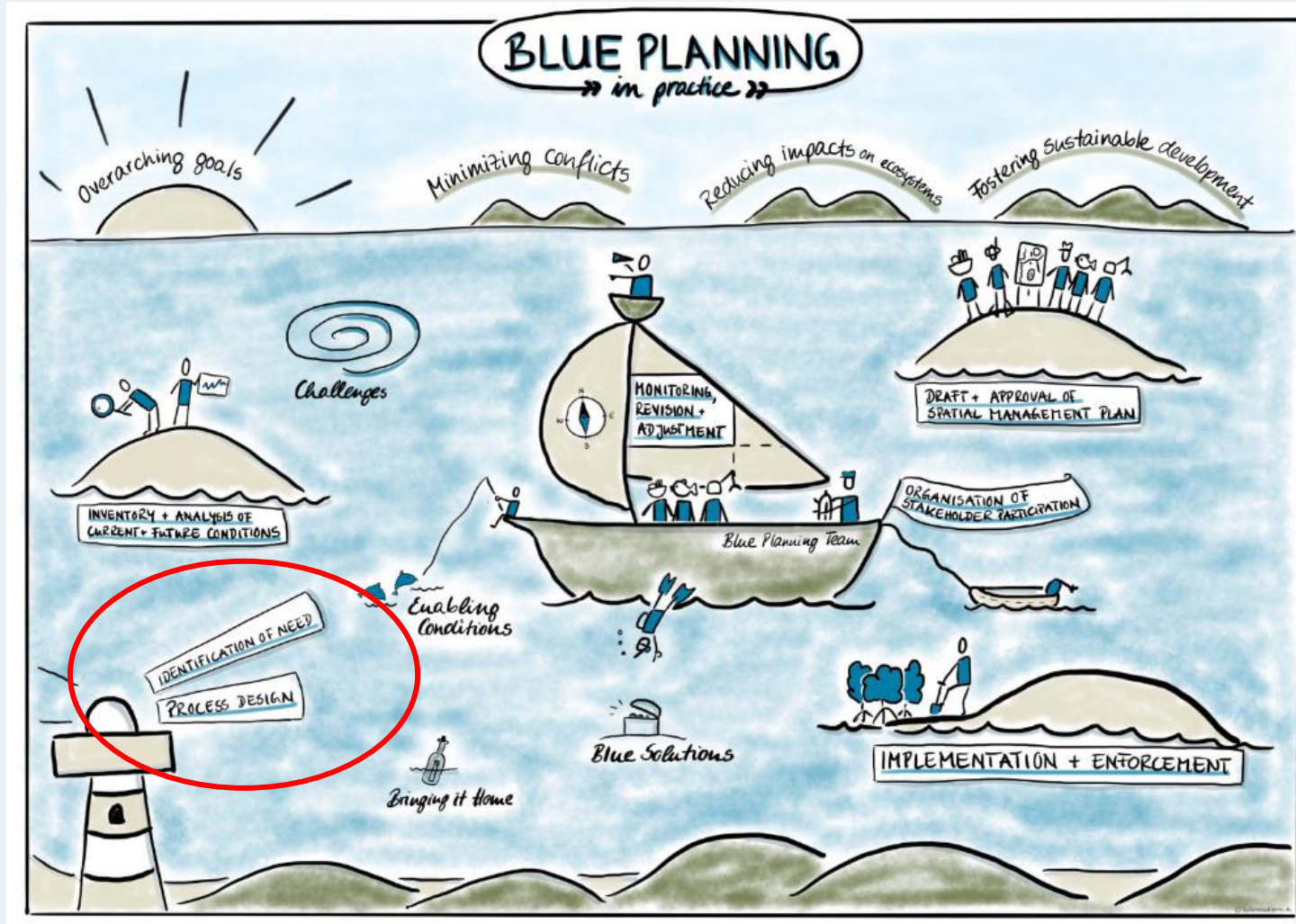
Presenter

Position

Date



Identifying the need and process design





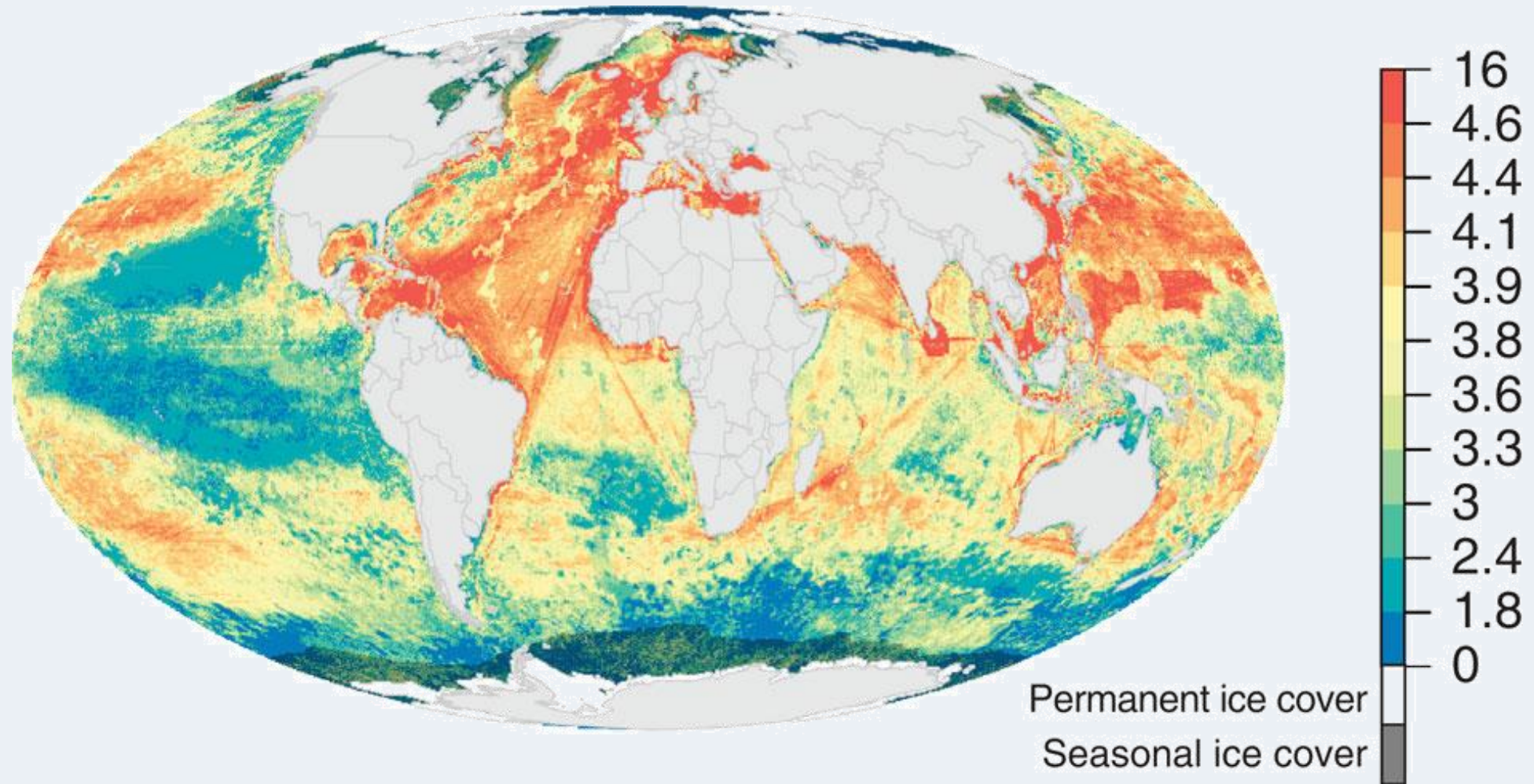
The sea...

An empty expanse...

Big enough to look after itself...

So why bother with planning?

Cumulative human impact to marine ecosystems as of 2013



Impact scores are based on 19 anthropogenic stressors (Halpern *et al.*, 2013)

Diversity of human uses in the ocean



By Erick Ross Salazar

... in fact

**There are a growing number of uses
The marine environment is changing
Societal demands are increasing**

→ Good reasons for Blue Planning!

Four main reasons countries engage in Blue Planning

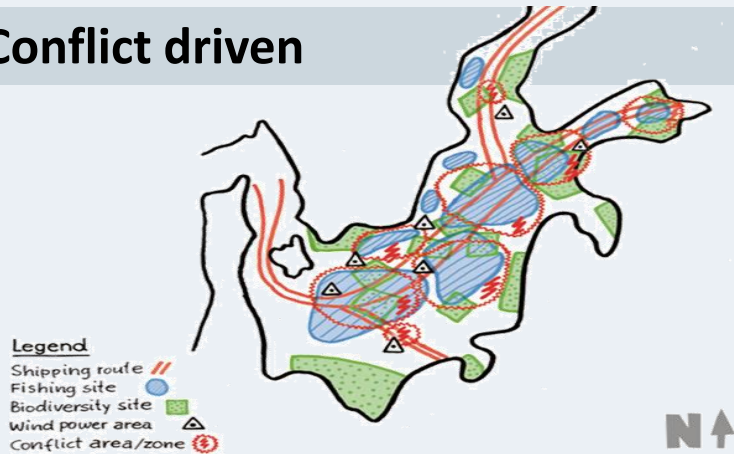
Policy driven or legal requirement



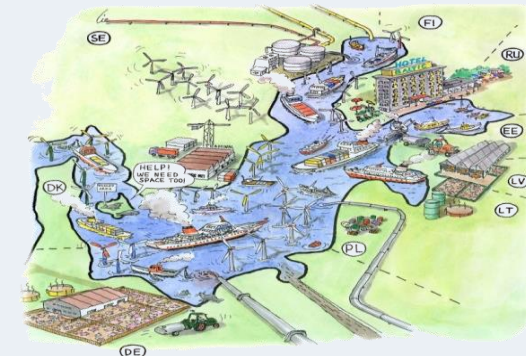
Opportunity driven



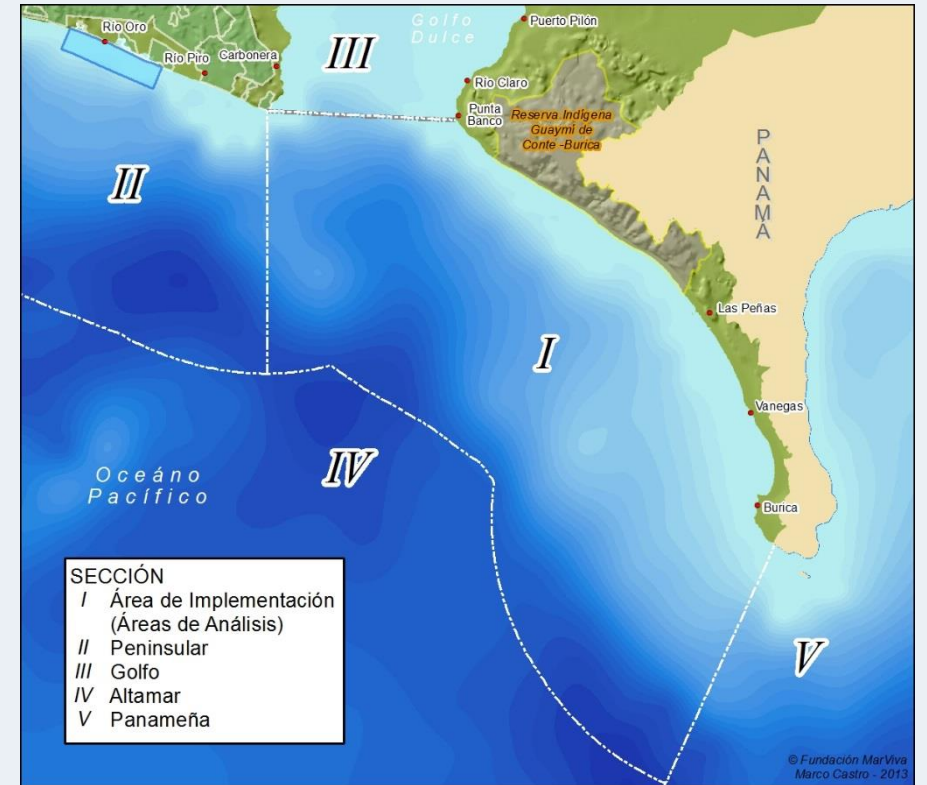
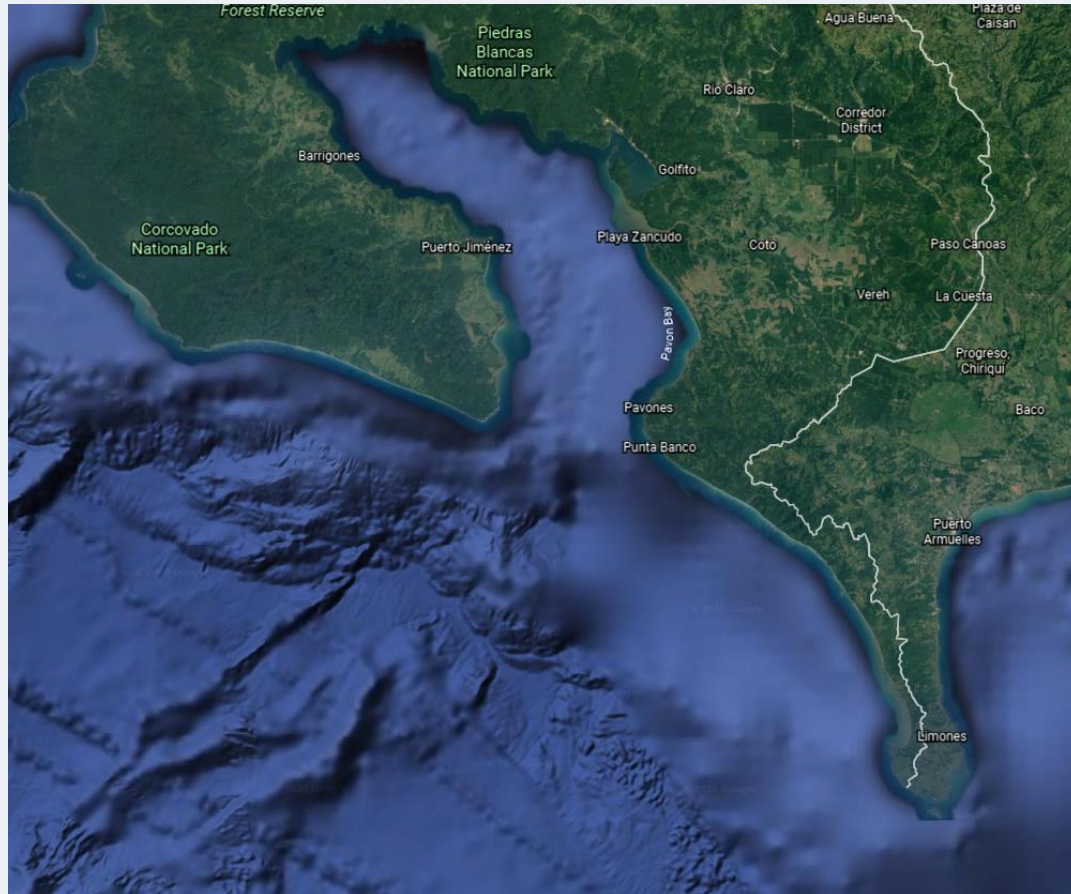
Conflict driven



Problem driven



What exact area are we talking about?



Source: www.marviva.net

What is particular/different in the marine realm?

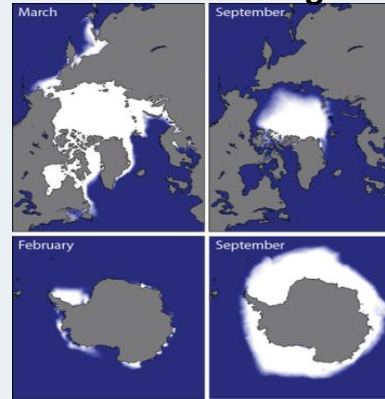
Multi-dimensionality and connectivity



De: MMO Guides, UK

Temporal scale

Sea ice climatologies



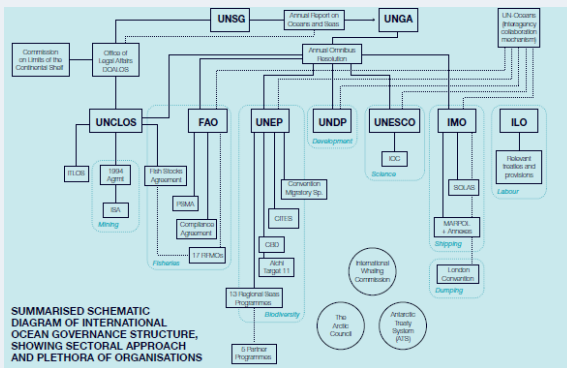
Source: NSIDC, USA

Knowledge and uncertainty



© J Ziegler

Property rights and governance



Enforcement and management



Climate change



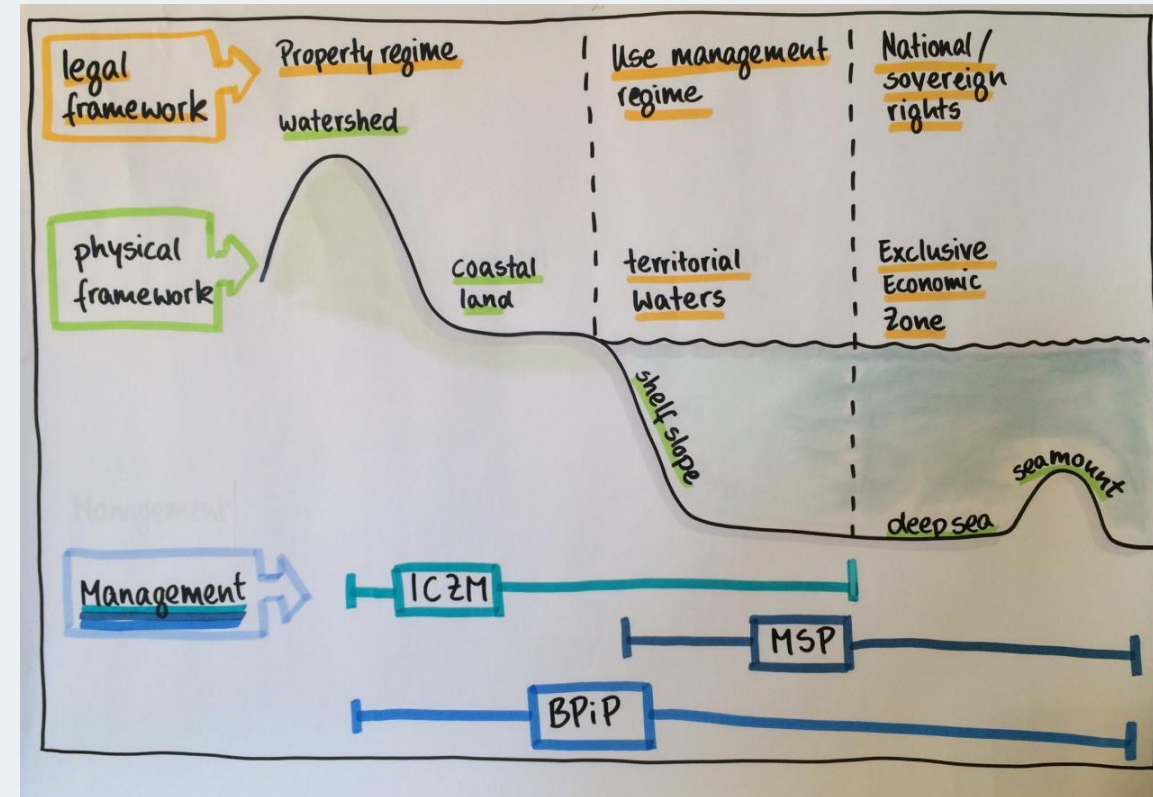
Training course

BLUE PLANNING → in practice →



Blue Planning in Practice

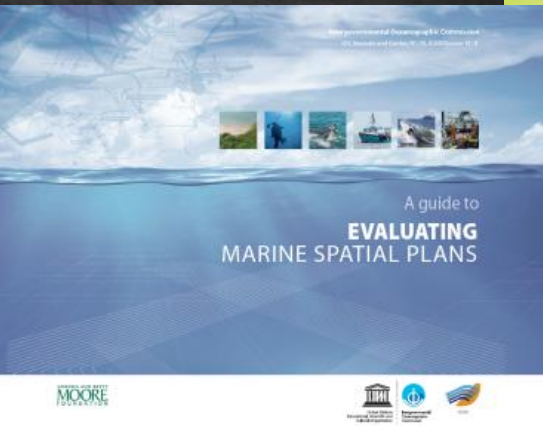
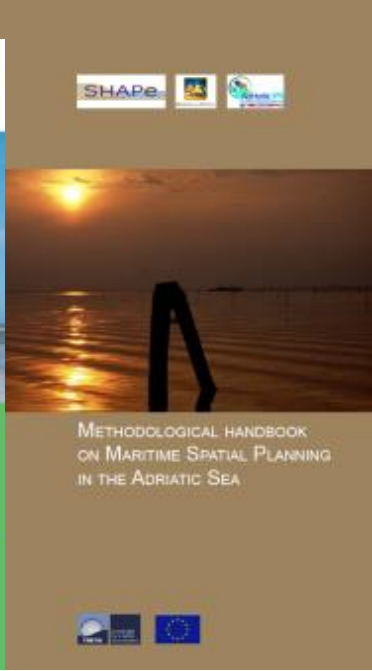
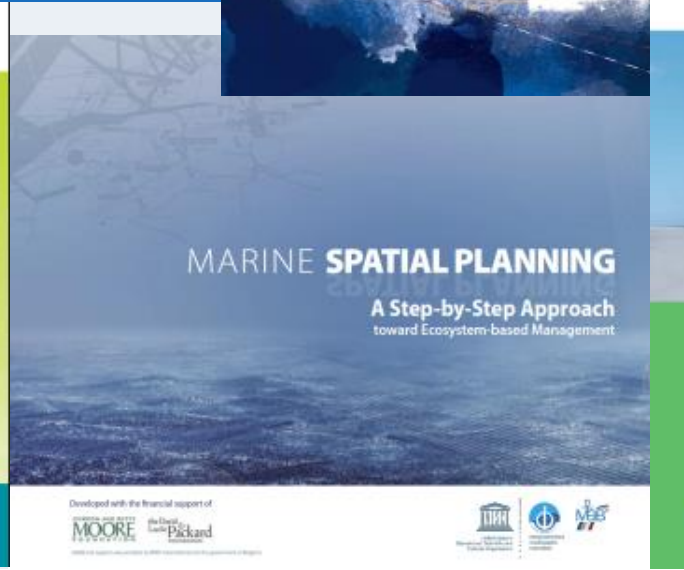
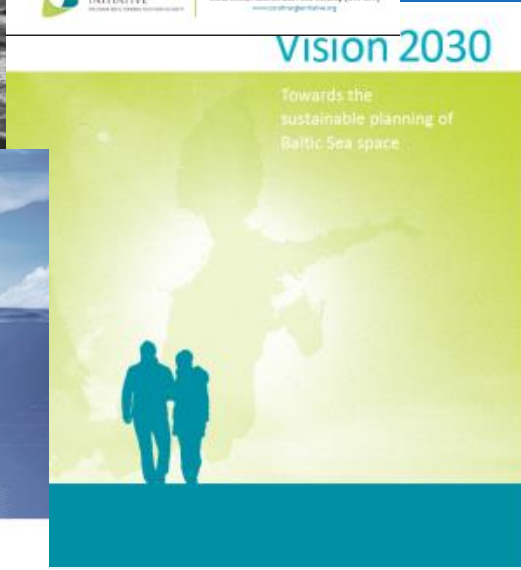
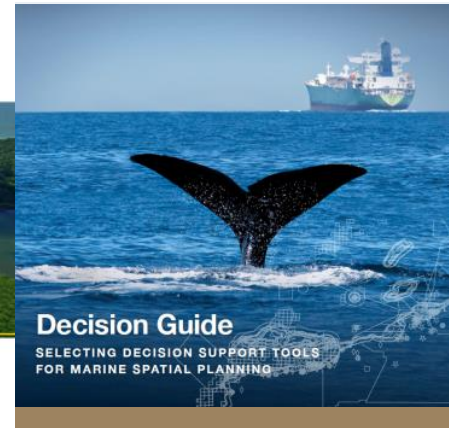
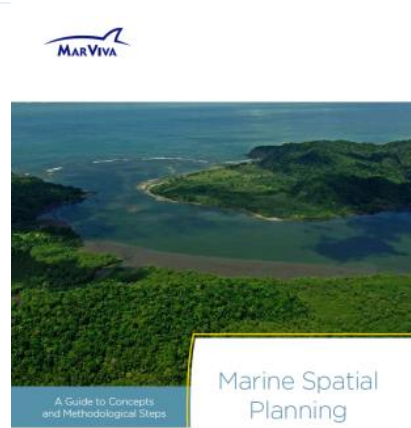
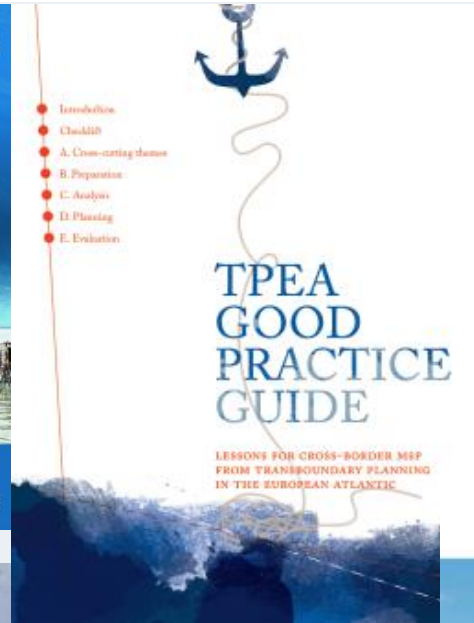
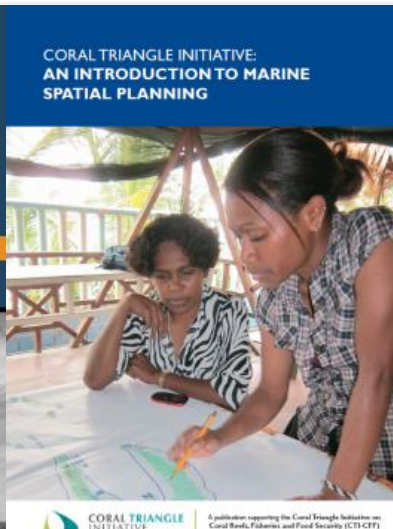
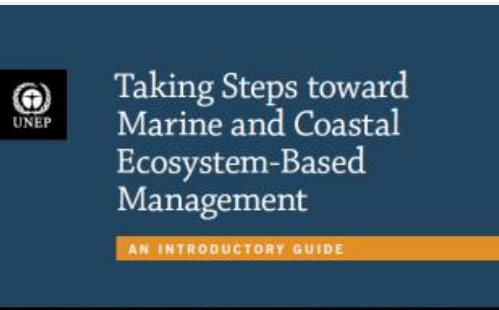
- **Overarching term** for approaches such as integrated coastal zone management, coastal and marine spatial planning, and coastal development planning.
- Promoting the **ecosystem-based approach**.
- Stretching from **coasts to oceans**.
- Fostering **Sustainable Ocean Economy**.
- **Minimizing conflicts** among users.
- **Reducing impacts on ecosystems**.
- Tool to **tackle climate change** and **poverty**.
- Contribution to **achieve global targets** (SDG, CBD, etc.).
- **Promoting iterative processes** (adaptive management).



Added value?

- Build upon and cross-reference **relevant existing guidance resources and approaches.**

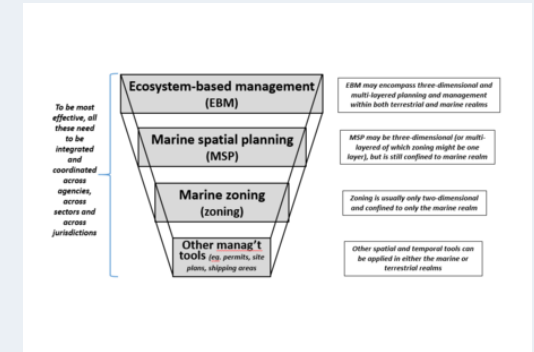
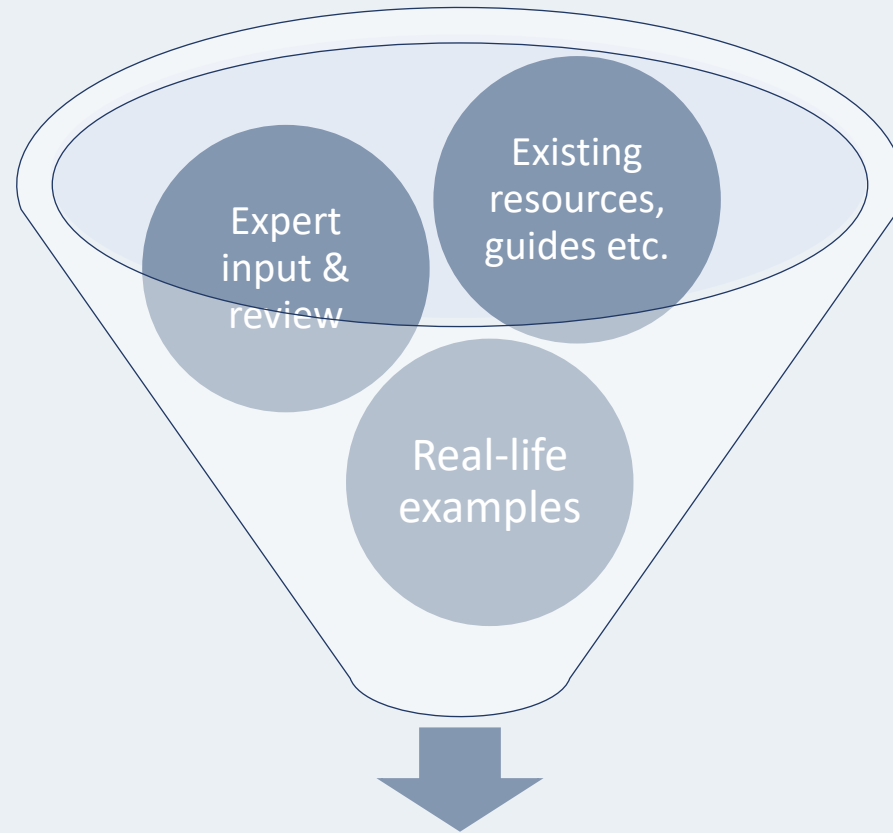
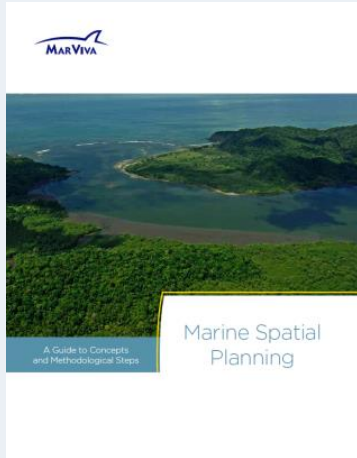
Many tools and guides are available



Added value?

- Build upon and cross-reference **relevant existing guidance resources and approaches**.
- Offer **practical guidance for planners and practitioners**, re-package information and focus on **“how to” implement** a Blue Planning process.

Practice-oriented training for decision-makers and practitioners

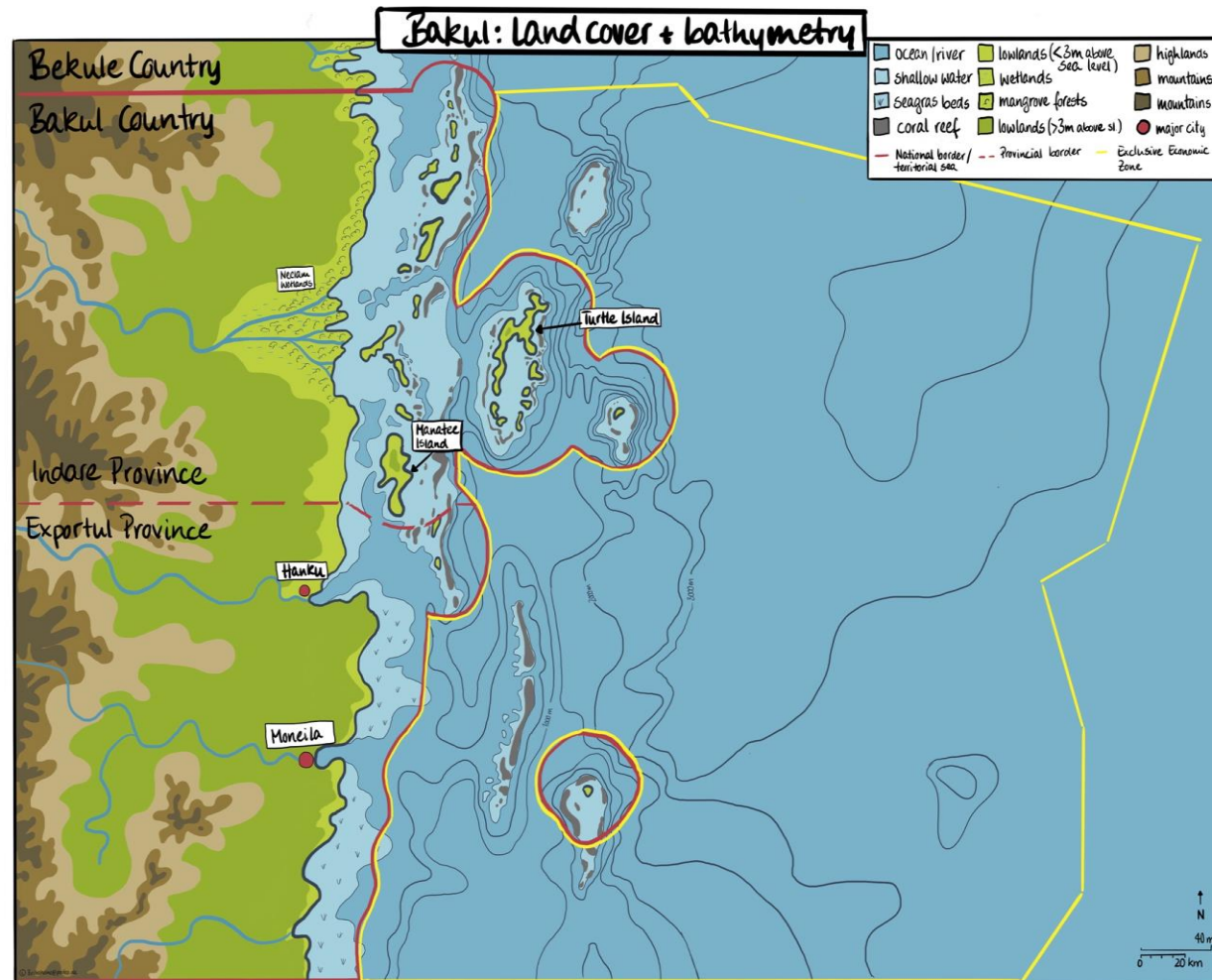


Blue Planning in Practice

Added value?

- Build upon and cross-reference **relevant existing guidance resources and approaches.**
- Offer **practical guidance for planners and practitioners**, re-package information and focus on **“how to” implement** a Blue Planning process.
- Uses the Harvard Case Methodology, which provides learning through **interactive practical work by course participants.**

Interactive practical work



Added value?

- Build upon and cross-reference **relevant existing guidance resources and approaches**.
- Offer **practical guidance for planners and practitioners**, re-package information and focus on **“how to” implement** a Blue Planning process.
- Uses the Harvard Case Methodology, which provides learning through **interactive practical work by course participants**.
- Based on **practical experiences (Blue Solutions and Case Studies)**.

Practical experiences

PANORAMA SOLUTIONS FOR A HEALTHY PLANET

giz G·R·I·D ARENDAL IUCN UN environment programme

Hosted by Blue Solutions & implemented by our Partners

Portals | All / Explorer | Portal de áreas protegidas

<http://panorama.solutions/>

Solutions Building Blocks

Region ▾ Ecosystem ▾ Theme ▾ Type ▾

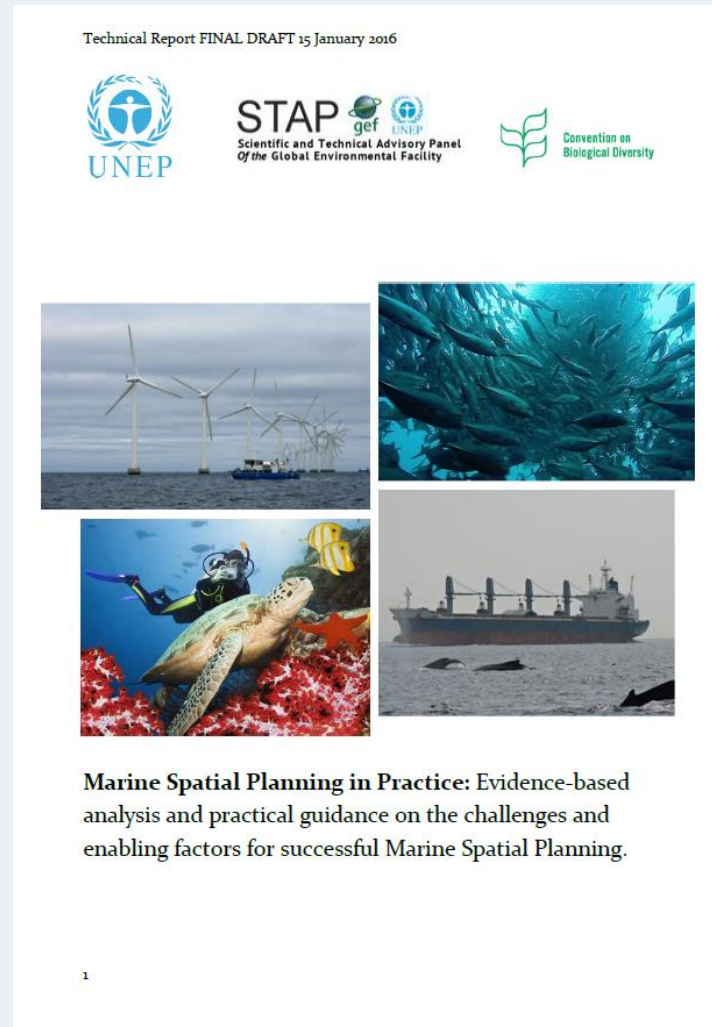
112 Solutions

Full Solution Full Solution Full Solution Full Solution

Added value?

- Build upon and cross-reference **relevant existing guidance resources and approaches**.
- Offer **practical guidance for planners and practitioners**, re-package information and focus on **“how to” implement** a Blue Planning process.
- Uses the Harvard Case Methodology, which provides learning through **interactive practical work by course participants**.
- Based on **practical experiences (Blue Solutions and Case Studies)**.
- Based on evidence-based **challenges & enabling factors** for Blue Planning (UNEP-study 2016).

Evidence-based challenges and enabling factors



Objective

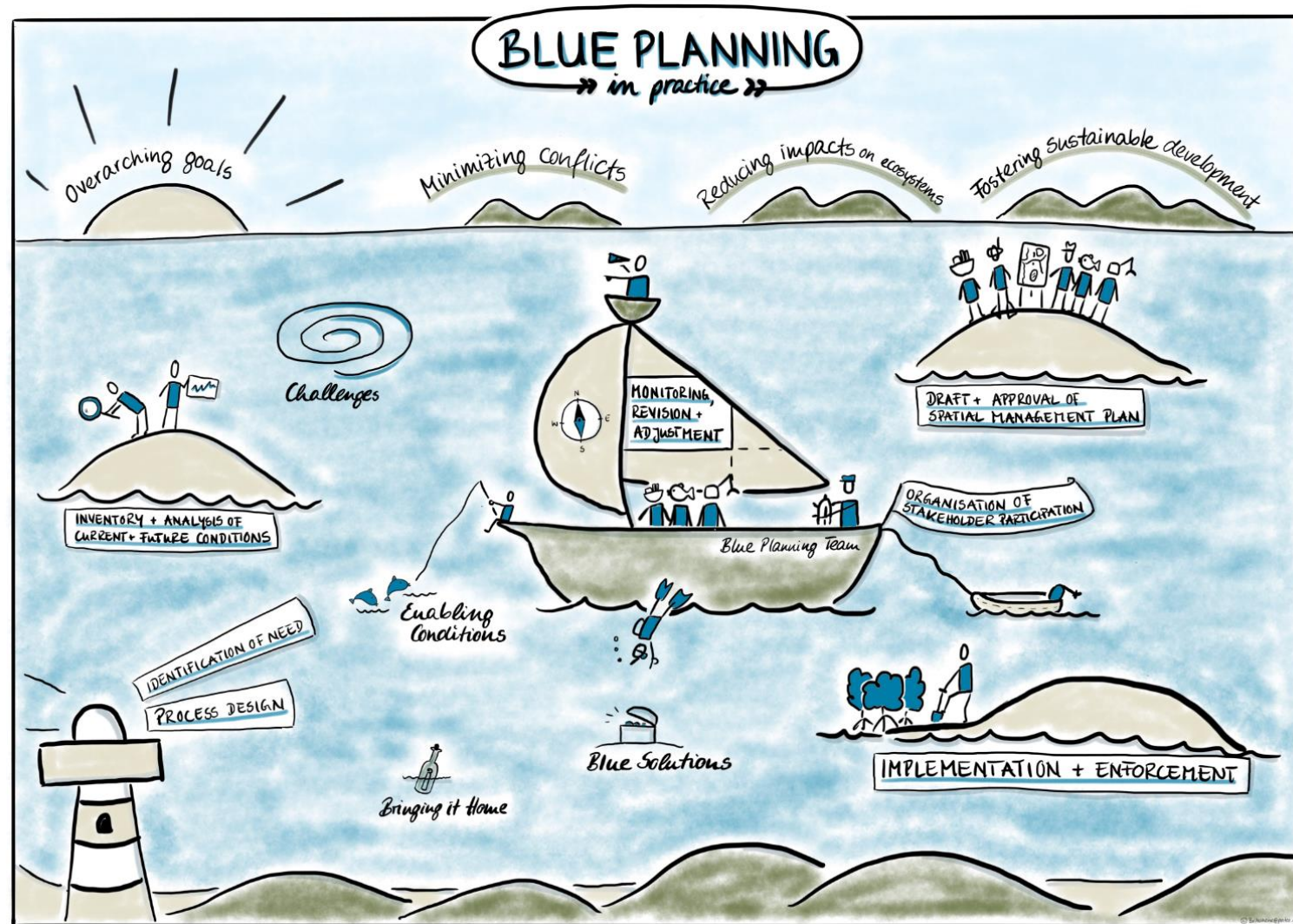
Strengthen practical planning and implementation.

→ An introduction to the theory and practical starting points of BPiP

Participants will:

- **Understand the relevance** of spatial planning as a topic for coastal and marine development and management.
- Learn to **think in systems** and understand the role of coastal and marine ecosystems for human well-being.
- Become **aware of the unique characteristics** of planning in coastal and marine areas.
- Be able to **balance interests** of different stakeholder on the basis of clear and transparent criteria.
- Become able to **start applying Blue Planning** in their own specific legal, governance and administrative contexts.
- Become **aware of barriers, challenges and enabling factors** for the effective use and implementation of Blue Planning approaches; and
- Be **enabled to develop their own strategies** to overcome those barriers and challenges.

Blue Planning in Practice



Identification of need and process design

Blue Planning in Practice exercises

1. Identify need.
2. Establish authority.
3. Organize the process.
4. Define principles and vision.
5. Develop goals and SMART objectives.



Organization of stakeholder participation

Blue Planning in Practice exercises

1. Map stakeholders.
2. Identify stakeholders' interests.
3. Involve stakeholders.
4. Introduction: Build trust.



Inventory and analysis of current and future conditions

Blue Planning in Practice exercises

1. Map your seascape,
2. Identify spatial incompatibilities.
3. Determine when Decision Support Tools are useful.



Spatial Incompatibilities

USE	biodiversity protection	artisanal fisheries	industrial fishing	sand mining	diver tourism	transport
biodiversity protection	/	+2	+2	-2	+2	-1
artisanal fisheries	-1	/	-1	-1	+1	-1
industrial fishing	-2	0	/	-1	-2	+2
sand mining	-2	-1	-1	/	-2	-1
diver tourism	+1	-1	-2	-2	/	-2
transport	-1	-1				/

Drafting and approving the spatial management plan

Blue Planning in Practice exercises

1. Identify Blue Planning measures.
2. Allocate sea use.
3. Explore positions and negotiate the draft plan.



Implementation and enforcement

Blue Planning in Practice exercises

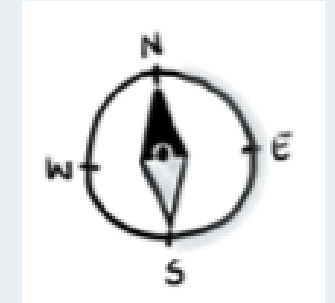
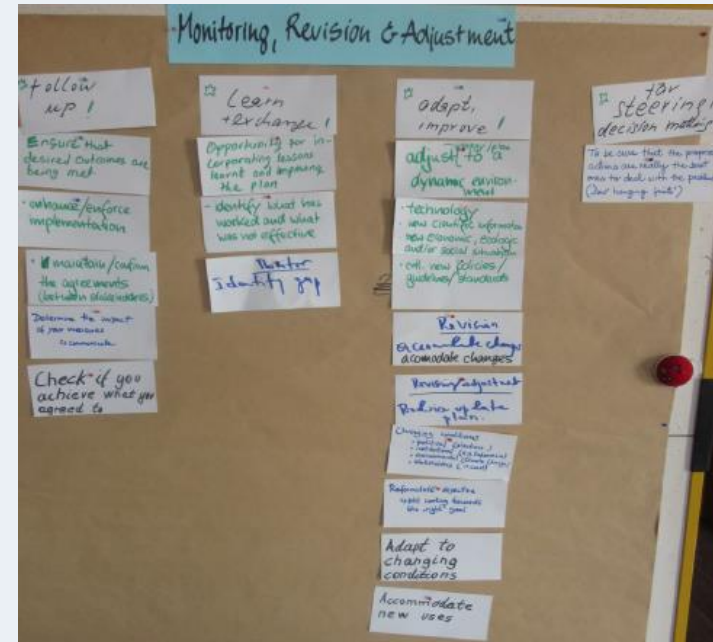
1. Communicate Blue Planning.
2. Implement effectively.



Monitoring, revision and adjustment

Blue Planning in Practice exercises

1. Measure progress.
2. Reflect upon the process.
3. Adapt the Blue Plan.



Training material

Handbook for participants

BLUE SOLUTIONS

TRAINING

BLUE PLANNING

Ecosystem-based

Participants Handbook

BLUE PLANNING
→ in practice →

Training course

PPTS



Trainer Manual

BLUE SOLUTIONS

TRAINING

BLUE PLANNING IN PRACTICE

Ecosystem-based Coastal and Marine Planning and Management

Trainer Manual

BLUE IES

Integrating Ecosystem Services into Coastal and Marine Development Planning

UE CCA

State Change Adaptation in Coastal and Marine Areas

PUBLISHED BY

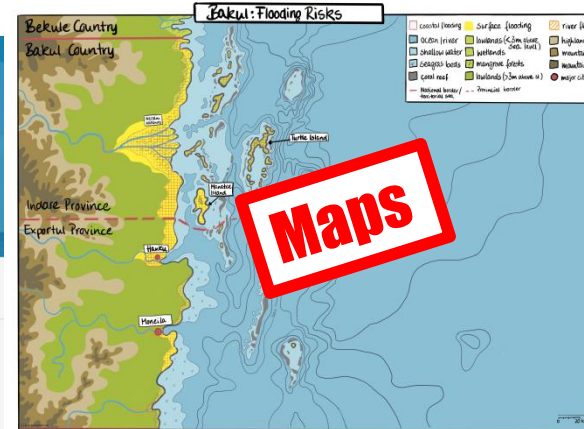
Deutsche Gesellschaft für Internationale Zusammenarbeit (GIZ) GmbH
Registered offices Bonn and Eschborn, Germany

1228 44 60-0 (Bonn)
1 6196 79-0 (Eschborn)
Hammarskjöld-Weg 1-5
53576 Eschborn, Germany

T +49 6196 79-0
F +49 6196 79-11 15
E info@giz.de
I www.giz.de

1

http://panorama.solutions/



Maps



Source: WWF



BLUE SOLUTIONS

Thank you!

Contact:

Email

<http://bluesolutions.info/>

<http://www.panorama.solutions/en/portal/marine-coastal>

